

IBM

Carnegie Mellon

Connection subgraphs

Christos Faloutsos (CMU & IBM)
Kevin McCurley (IBM)
Andrew Tomkins (IBM)

SIAM-DM04

Faloutsos, McCurley & Tomkins

1

IBM

Carnegie Mellon

Outline

- Introduction / Motivation
- Survey
- Proposed Method
- Algorithms
- Experiments
- Conclusions

SIAM-DM04

Faloutsos, McCurley & Tomkins

2

IBM

Carnegie Mellon

Introduction

- What are the best paths between ‘Kidman’ and ‘Diaz’?

SIAM-DM04

Faloutsos, McCurley & Tomkins

3

IBM

Carnegie Mellon

Problem definition

- Given a graph, and two nodes s and t , and a 'budget' b of nodes
- Find the best b nodes that capture the relationship between s and t

SIAM-DM04

Faloutsos, McCurley & Tomkins

4

IBM

Carnegie Mellon

Problem definition

- Given a graph, and two nodes s and t , and a 'budget' b of nodes
- Find the best b nodes that capture the relationship between s and t

SIAM-DM04

Faloutsos, McCurley & Tomkins

5

IBM

Carnegie Mellon

Problem definition

- Part 1: How to quantify the goodness?
- Part 2: How to pick ‘best few’ nodes?
- Part 3: Scalability: large graphs (10×7 nodes)

SIAM-DM04

Faloutsos, McCurley & Tomkins

6

IBM

Carnegie Mellon

Survey

- Graph Partitioning
 - [Karypis+Kumar]; [Newman+];
 - [Virtanen]; ...
- Communities
 - [Flake+]; [Tomkins, Kleinberg+]
- External distances [Palmer+]

SIAM-DM04

Faloutsos, McCurley & Tomkins

7

IBM

Carnegie Mellon

Outline

- Introduction / Motivation
- Survey
- Proposed Method
- Algorithms
- Experiments
- Conclusions

SIAM-DM04

Faloutsos, McCurley & Tomkins

8

IBM

Carnegie Mellon

Proposed method

- part 1: measuring goodness:
 - electricity
- part 2: finding good paths
 - dynamic programming
- part 3: scalability
 - heuristics

SIAM-DM04

Faloutsos, McCurley & Tomkins

9

IBM

Carnegie Mellon

Electricity

- Why not shortest path?

SIAM-DM04

Faloutsos, McCurley & Tomkins

10

IBM

Carnegie Mellon

Electricity

- Why not shortest path?
- Why not net. flow?

SIAM-DM04

Faloutsos, McCurley & Tomkins

11

IBM

Carnegie Mellon

Electricity

- Why not shortest path?
- Why not net. flow?
- Why not plain 'voltages'?

SIAM-DM04

Faloutsos, McCurley & Tomkins

12

IBM Carnegie Mellon

Electricity

- Why not shortest path?
- Why not net. flow?
- Why not plain 'voltages'?

SIAM-DM04 Faloutsos, McCurley & Tomkins 13

IBM Carnegie Mellon

Electricity, cont'd

- Proposed method: voltages **with** universal sink:
 - ~ 'tax collector'
- goodness of a path:
- its electric current(*)!

SIAM-DM04 Faloutsos, McCurley & Tomkins 14

IBM Carnegie Mellon

Outline

- Introduction / Motivation
- Survey
- Proposed Method
- ➔ • Algorithms
- Experiments
- Conclusions

SIAM-DM04 Faloutsos, McCurley & Tomkins 15

IBM Carnegie Mellon

Electricity – Algorithm

- Voltages/Amperages can be computed easily ($O(E)$)
- without universal sink:

$$v(i) = \sum [v(j) * C(i,j) / C(i,*)]$$

$$i \neq source, sink$$

$$v(source)=1; v(sink)=0$$

SIAM-DM04 Faloutsos, McCurley & Tomkins 16

IBM Carnegie Mellon

Electricity – Algorithm

With universal sink:

$$v(i) = \frac{1}{1+a} \sum [v(j) * C(i,j) / C(i,*)]$$

(~ insensitive to $a (=1)$)

SIAM-DM04 Faloutsos, McCurley & Tomkins 17

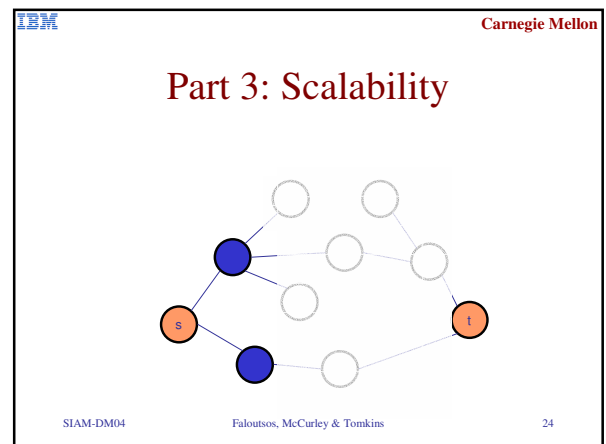
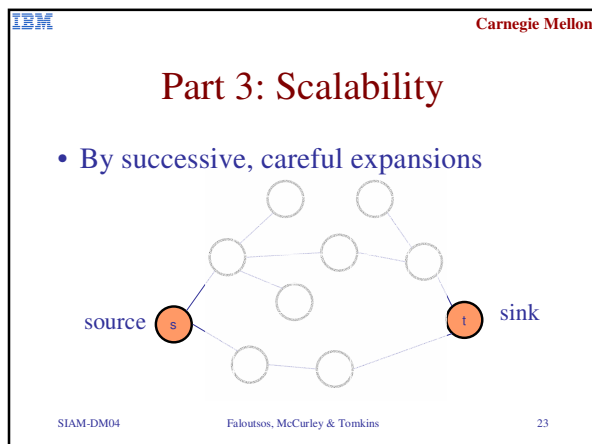
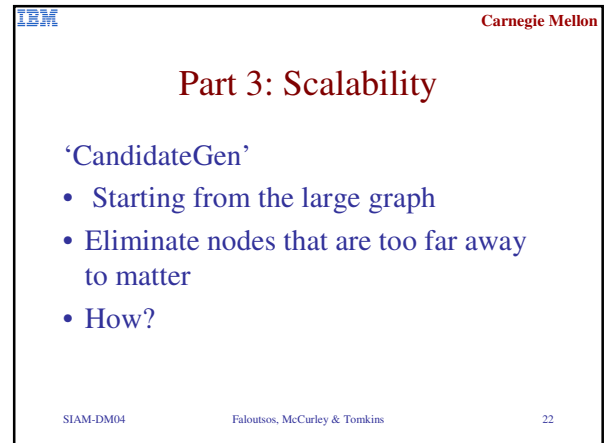
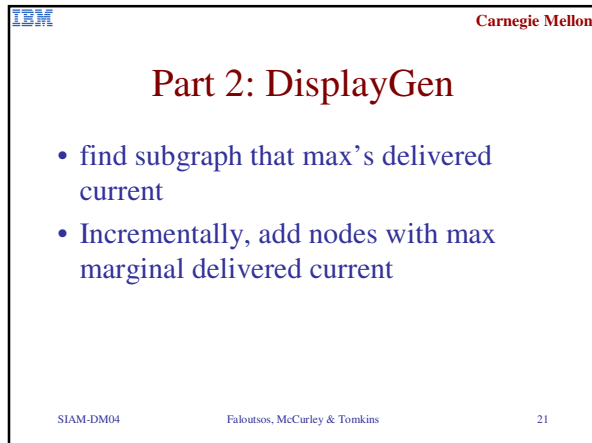
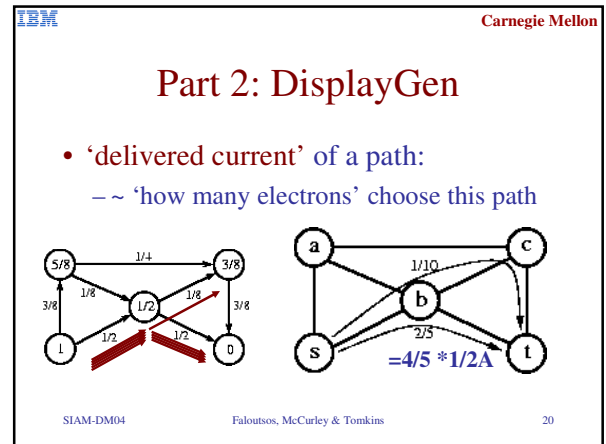
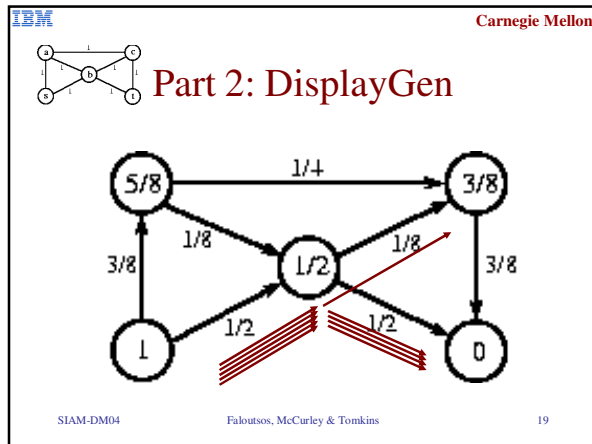
IBM Carnegie Mellon

Part 2: DisplayGen

Given the voltages and amperages

- Which b nodes to keep?
- (and how to spot them quickly?)

SIAM-DM04 Faloutsos, McCurley & Tomkins 18



IBM Carnegie Mellon

Part 3: Scalability

SIAM-DM04 Faloutsos, McCurley & Tomkins 25

IBM Carnegie Mellon

Part 3: Scalability

SIAM-DM04 Faloutsos, McCurley & Tomkins 26

IBM Carnegie Mellon

Pseudo-code

Until (*stoppingCriterion*)
 use *pickHeuristic()* to pick a node *n*
 expand node *n*

SIAM-DM04 Faloutsos, McCurley & Tomkins 27

IBM Carnegie Mellon

Pseudo-code

pickHeuristic() favors

- Nearby nodes with
- Strong connections to source or sink and with
- Small degree

SIAM-DM04 Faloutsos, McCurley & Tomkins 28

IBM Carnegie Mellon

Outline

- Introduction / Motivation
- Survey
- Proposed Method
- Algorithms
- ➡ • Experiments
- Conclusions

SIAM-DM04 Faloutsos, McCurley & Tomkins 29

IBM Carnegie Mellon

Experiments

- on large real graph
 - ~15M nodes, ~100M edges, weighted
 - ‘who co-appears with whom’ (from 500M web pages)
- Q1: Quality of ‘voltage’ approach?
- Q2: Speed/accuracy trade-off?

SIAM-DM04 Faloutsos, McCurley & Tomkins 30

IBM Carnegie Mellon

Q1: Quality

- Actors (A); Computer-Scientists (CS)
- Kidman-Diaz (A-A)
- Negreonte-Palmisano (CS-CS)
- Turing-Stone (CS-A)

SIAM-DM04 Faloutsos, McCurley & Tomkins 31

IBM Carnegie Mellon

(A-A) Kidman-Diaz

- What are the best paths between 'Kidman' and 'Diaz'?

SIAM-DM04 Faloutsos, McCurley & Tomkins 32

IBM Carnegie Mellon

CS-CS: Negreonte - Palmisano

SIAM-DM04 Faloutsos, McCurley & Tomkins 33

IBM Carnegie Mellon

CS-CS: Negreonte - Palmisano

SIAM-DM04 Faloutsos, McCurley & Tomkins 34

IBM Carnegie Mellon

CS-A: Turing - Stone

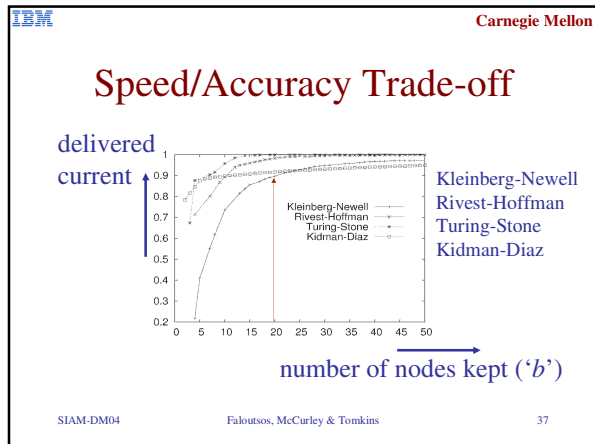
SIAM-DM04 Faloutsos, McCurley & Tomkins 35

IBM Carnegie Mellon

Outline

- Introduction / Motivation
- ...
- Experiments
 - Q1: quality
 - Q2: speed/accuracy trade-off
- Conclusions

SIAM-DM04 Faloutsos, McCurley & Tomkins 36



- IBM Carnegie Mellon
- ## Speed/accuracy trade-off
- 80/20-like rule: the first few nodes/paths
 - contribute the vast majority of 'delivered current'
 - Thus: CandidateGen makes sense
- SIAM-DM04 Faloutsos, McCurley & Tomkins 38

- IBM Carnegie Mellon
- ## Conclusions
- Defined the problem
 - Part 1: Electricity-based method to measure quality
 - Part 2: Dynamic programming to spot best paths ('DisplayGen')
 - Part 3: Scalability with good accuracy ('CandidateGen')
 - Operational system
- SIAM-DM04 Faloutsos, McCurley & Tomkins 39